

## Overview

This document describes the process for configuring an exacqVision system for use with an S2 NetBox access control system. To configure the exacqVision system, complete the following steps:

## Most Recent Test Scenario

- Windows 10 and Ubuntu Linux 18.04 (ExacqVision servers)
- evOVID plugin version 1.1.12.123380
- ExacqVision Server / Client / Web version 19.09

## Installation

1. Download and install the Web Service from [exacq.com](http://exacq.com).
2. Create a username/password with Power User or Full Admin permission on the exacqVision recorder to be used by S2 and the OVID driver.
3. Obtain the IP address of the exacqVision Web Service server.
4. Download the OVID driver [here](#)
  - a. If installing on Windows, run the installer and continue.
  - b. If installing on linux open a terminal window and type the following  
sudo dpkg -i /home/admin/Downloads/exacqVisionOVIDDEV-X\_X\_XX\_XXXXX.deb (where X's are version numbers)

**Note:** if the command line interface is not used to install ovid on a Linux machine and instead the user double clicks on the .deb file and installs through the Package Manager then the installer will fail to provide an icon on the desktop for editing the evOvid configuration file. This file is found at `/usr/local/exacq/ovid/ovid.ini` for editing manually.

## Configuration

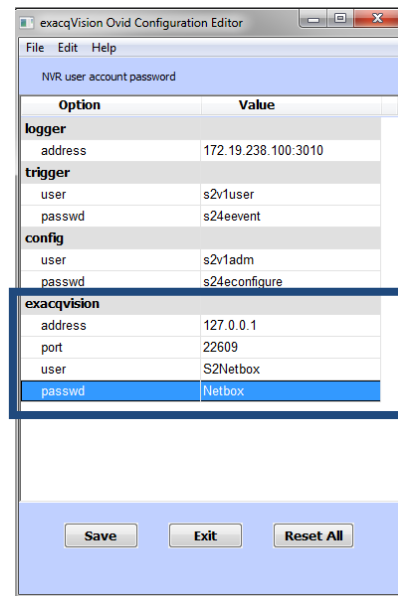
For Windows or Linux versions an icon is placed on the desktop during the install for editing the file. (If there is no icon on desktop see note above). Double click the icon to launch the editor. This example is linux based. When launching the editor you may be asked for a super user or root password in linux. This password must be known to save any changes to the OVID configuration file.



If installing the S2 OVID driver on the same machine as the exacqVision server, the default settings will be correct and no changes will be necessary. If installing the S2 OVID driver on a system other than the exacqVision server please edit the IP Address to point to the exacqVision server.

The port number is 22609 by default and unless changed on the exacqVision recorder should remain the same.

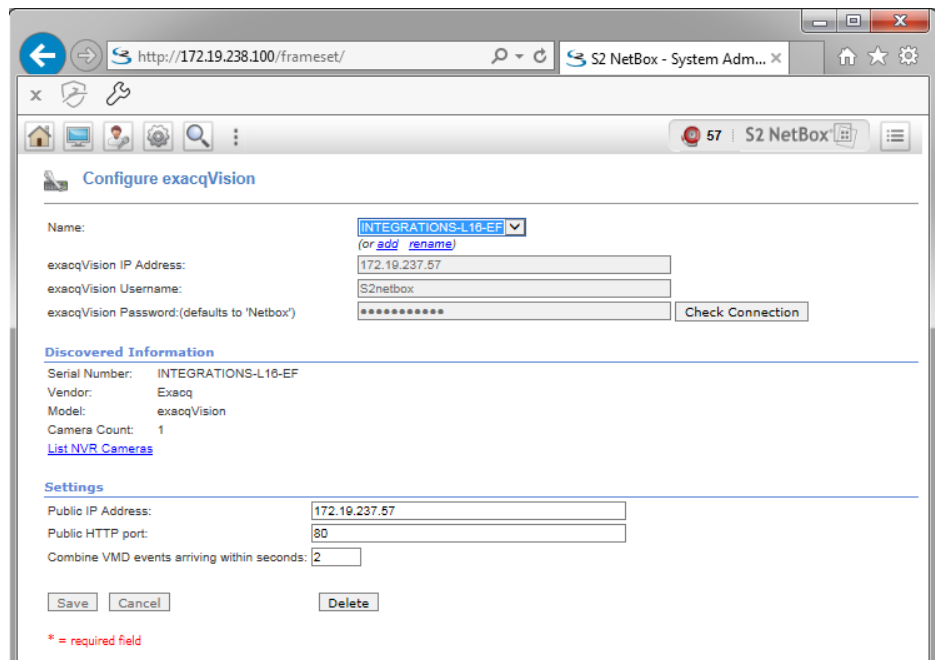
User and password are the credentials that S2 will use to log in to the exacqVision recorder. Ensure that an account with these credentials exists on the exacqVision recorder with either Power User or Admin level privileges. If not, create an account on the exacqVision recorder with these credentials and privileges or change these credentials here to match an account that is to be used on the exacqVision recorder for purposes of S2 logging in.



## Adding ExacqVision to Netbox

1. Browse to the IP address of the S2 NetBox and enter the default username and password (**admin/admin**).
2. Navigate to **Setup | Video | NVRs | Configure ExacqVision** on the left using the gear icon.
3. Enter the IP address of the exacqVision server location.
4. Enter the username and password configured in the ExacqVision client for that system. The default values expected for this are shown in the configuration editor on the previous page.
5. Click Check Connection. If you receive an error message here, first start by checking the port configuration under Settings at the bottom of this page (shown below). The default port for ExacqVision Web Service is port 80.
6. Once the connection is established, click Save. You can now view your cameras in the S2 interface.
7. Click the **Help** button in the upper-right corner of the screen, if needed.

**NOTE:** If you are configuring S2 to connect to multiple exacqVision servers, you must have ExacqVision Web Service **and** ExacqVision OVID plugin running on each system. Configure the OVID plugin and the S2 connection with the correct username and password for each instance. (step 2 of installation process above)



Integration guides prOVIDED by S2 can be found under the help menu in the top right corner.

## Contact info and Support

(Technical Support, Customer Service, Training tools, and more)

### S2 Support

<https://www.s2sys.com/support>

### Exacq Support

<https://exacq.com/support/>

